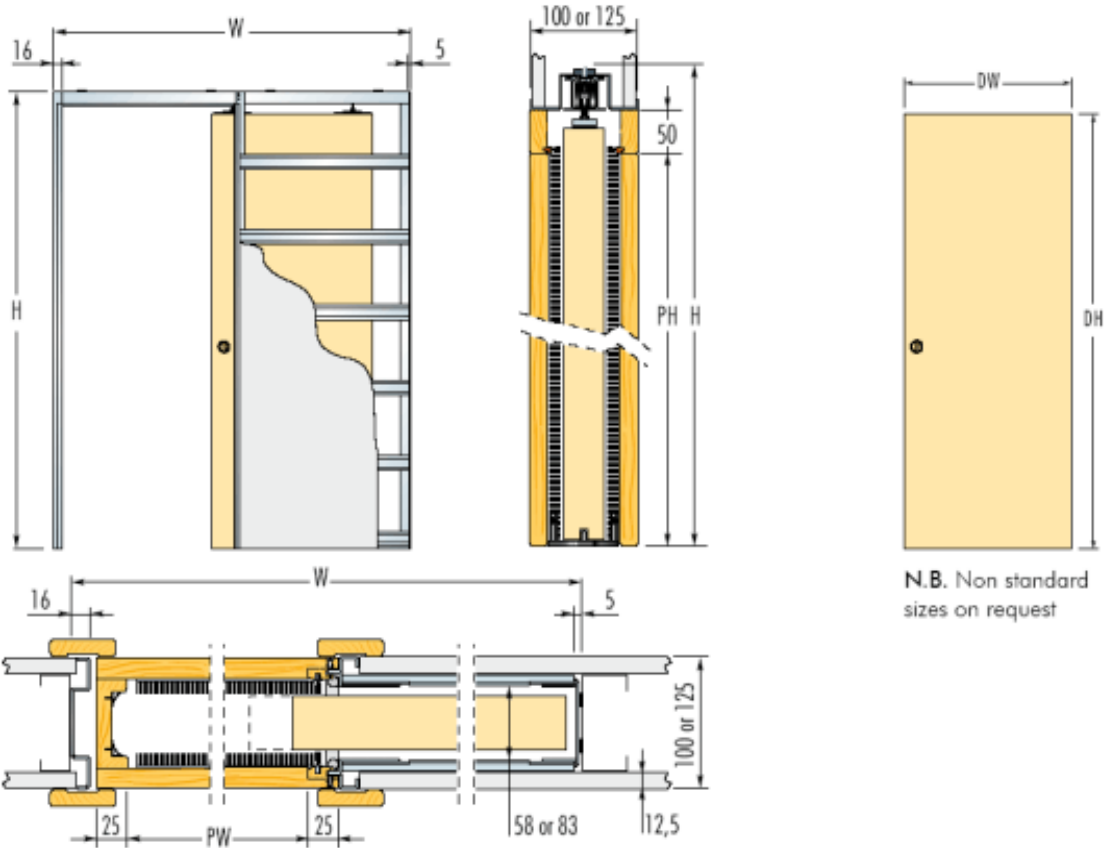


FRAMES FOR SINGLE DOORS

finished wall thickness 100 or 125 mm



N.B. Non standard sizes on request

FRAMES FOR SINGLE DOORS			DOOR PANEL UK		NOTES
Max. Passage Size PW x PH	Overall Dimension W x H	Finished Wall	Standard		
			DW	DH	
600 x 2030	1288 x 2115	100 or 125	626	2040	Suitable for use with 35 - 44 mm thick doors Max. door weight 80 kg. (120 kg. on request)
700 x 2030	1488 x 2115	100 or 125	726	2040	
800 x 2030	1688 x 2115	100 or 125	826	2040	When fitting flush pull handles we recommend the stop be regulated so the door protrudes from the pocket to avoid risk to fingers.
900 x 2030	1888 x 2115	100 or 125	926	2040	
1000 x 2030	2088 x 2115	100 or 125	1026	2040	Should the door be set to enter the pocket completely we do not accept any liability.
585 x 1971	1273 x 2056	100 or 125	2ft. 0in. x 6ft. 6in. (610 x 1981mm)		
661 x 1971	1449 x 2056	100 or 125	2ft. 3in. x 6ft. 6in. (686 x 1981mm)		
737 x 1971	1625 x 2056	100 or 125	2ft. 6in. x 6ft. 6in. (762 x 1981mm)		
813 x 1971	1701 x 2056	100 or 125	2ft. 9in. x 6ft. 6in. (838 x 1981mm)		
900 x 1971	1888 x 2056	100 or 125	3ft. 0in. x 6ft. 6in. (914 x 1981mm)		
775 x 2020	1665 x 2105	100 or 125	2ft. 8in x 6ft. 8in. (813 x 2032mm)		

dimensions are given in mm.

Doorware Limited – Unit 43, Glenrock Business Campus, Ballybane, Galway – 00 353 (0) 91743100

info@pocketdoors.ie – www.pocketdoors.ie