

How to Guide: Confused about which size of pocket door system to choose? We can Help!

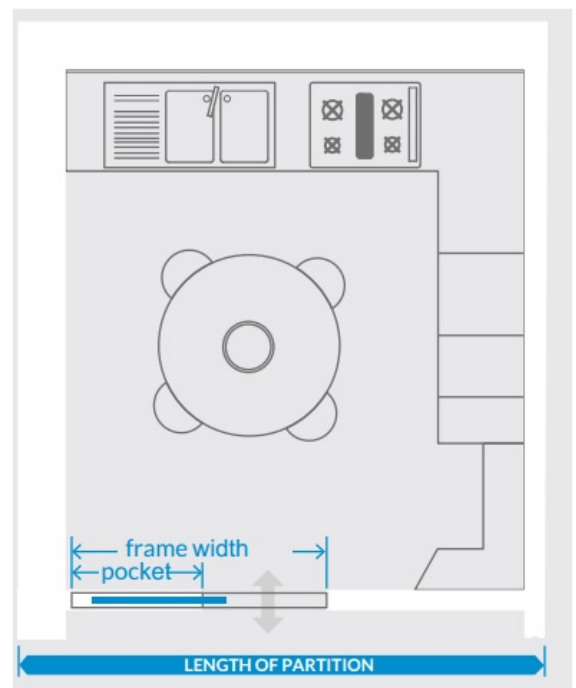
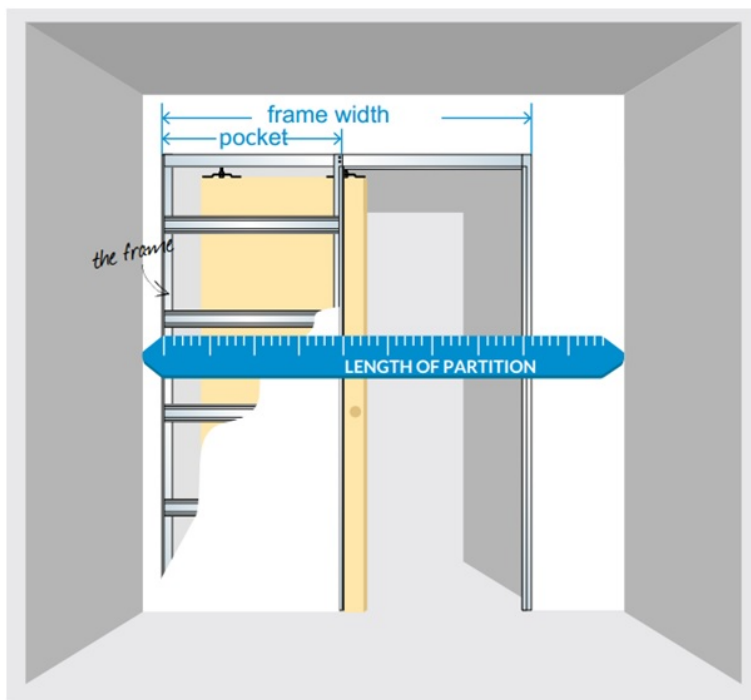
Step 1: Measure the available space

Step 2: Choose the standard pocket door frame size that will fit the space (our technical specs include handy size charts)

Step 3: Perhaps you need a wider passage width? Then you might consider a couple of alternative options

Using the Classic Single Pocket Door Systems as an example...

Step1: Measure the overall wall space you have available. The pocket door frame needs to be able to fit within this space as demonstrated below:



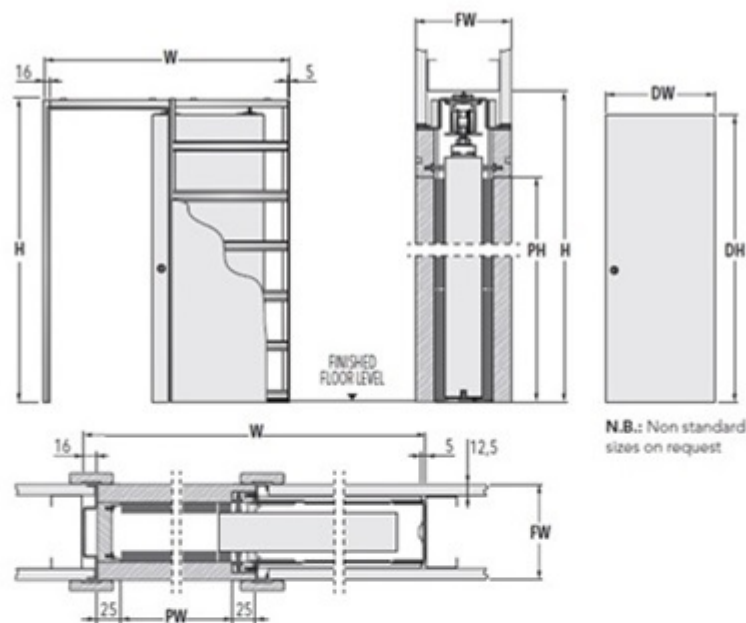
Step 2: Look at the sizing table and decide which frame size will fit within the available space and which size door you can use with that frame.

Example 1: Here is an example for a Classic single pocket door system.

Overall wall space/length of partition = 2000mm

Door panel size - Perhaps you would like to use largest possible door panel size to provide the largest passage width possible. From the size chart below for the Classic Single Pocket Door System below you can see that the widest frame size that will fit the space is 1888mm x 2115mm. This will provide a max. passage size of 900mm x 2030mm and will require you to buy a 926mm x 2040mm to fit the pocket door system.

Size Chart: Classic Single Pocket Door System



N.B.: Non standard sizes on request

FRAMES FOR SINGLE DOORS			DOOR PANEL UK	
MAX. PASSAGE SIZE PW x PH	OVERALL DIMENSION W x H	FINISHED WALL FW	DW	DH
600 x 2030	1288 x 2115	100 or 125	626	2040
700 x 2030	1488 x 2115	100 or 125	726	2040
800 x 2030	1688 x 2115	100 or 125	826	2040
900 x 2030	1888 x 2115	100 or 125	926	2040
1000 x 2030	2088 x 2115	100 or 125	1026	2040
585 x 1971	1273 x 2056	100 or 125	2ft. 0in. x 6ft. 6in. (610 x 1981 mm)	
661 x 1971	1449 x 2056	100 or 125	2ft. 3in. x 6ft. 6in. (686 x 1981 mm)	
737 x 1971	1625 x 2056	100 or 125	2ft. 6in. x 6ft. 6in. (762 x 1981 mm)	
813 x 1971	1701 x 2056	100 or 125	2ft. 9in. x 6ft. 6in. (838 x 1981 mm)	
900 x 1971	1888 x 2056	100 or 125	3ft. 0in. x 6ft. 6in. (914 x 1981 mm)	
675 x 1971	1463 x 2056	100 or 125	2ft. 4in. x 6ft. 6in. (711 x 1981 mm)	
775 x 2020	1663 x 2105	100 or 125	2ft. 8in. x 6ft. 8in. (813 x 2032 mm)	
850 x 2020	1838 x 2105	100 or 125	2ft. 10in. x 6ft. 8in. (864 x 2032 mm)	

Dimensions are given in mm

Example 2: Here is an example for a Classic single pocket door system where you have a particular door size you want to use.

You may already have an idea of the size of door panel you wish to use. You may want to reuse an existing door or to use a door that will match other doors in your property. Let's say it is a 826mm x 2040mm door panel.

Size Chart: Classic Single Pocket Door System

FRAMES FOR SINGLE DOORS			DOOR PANEL UK	
MAX. PASSAGE SIZE PW x PH	OVERALL DIMENSION W x H	FINISHED WALL FW	DW	DH
600 x 2030	1288 x 2115	100 or 125	626	2040
700 x 2030	1488 x 2115	100 or 125	726	2040
800 x 2030	1688 x 2115	100 or 125	826	2040
900 x 2030	1888 x 2115	100 or 125	926	2040
1000 x 2030	2088 x 2115	100 or 125	1026	2040
585 x 1971	1273 x 2056	100 or 125	2ft. 0in. x 6ft. 6in. (610 x 1981 mm)	
661 x 1971	1449 x 2056	100 or 125	2ft. 3in. x 6ft. 6in. (686 x 1981 mm)	
737 x 1971	1625 x 2056	100 or 125	2ft. 6in. x 6ft. 6in. (762 x 1981 mm)	
813 x 1971	1701 x 2056	100 or 125	2ft. 9in. x 6ft. 6in. (838 x 1981 mm)	
900 x 1971	1888 x 2056	100 or 125	3ft. 0in. x 6ft. 6in. (914 x 1981 mm)	
675 x 1971	1463 x 2056	100 or 125	2ft. 4in. x 6ft. 6in. (711 x 1981 mm)	
775 x 2020	1663 x 2105	100 or 125	2ft. 8in. x 6ft. 8in. (813 x 2032 mm)	
850 x 2020	1838 x 2105	100 or 125	2ft. 10in. x 6ft. 8in. (864 x 2032 mm)	

Dimensions are given in mm

You can see from the chart that your 826mm x 2040mm door will fit a frame with an overall dimension of 1688mm x 2115mm (this fits easily into the available wall space of 2000mm). This system will give you a passage size of 800 x 2030mm.

Please note, we always recommend to stick with standard door panel sizes for Irish Market. This way door panel shopping becomes hassle free, thus you are not restricted on style and designed and most likely your chosen door supplier will have standard sizes readily available off the shelf. The standard door panel sizes for Irish market are 711 x 1981mm, 762 x 1981mm, 813 x 2032mm and 864 x 2032mm.